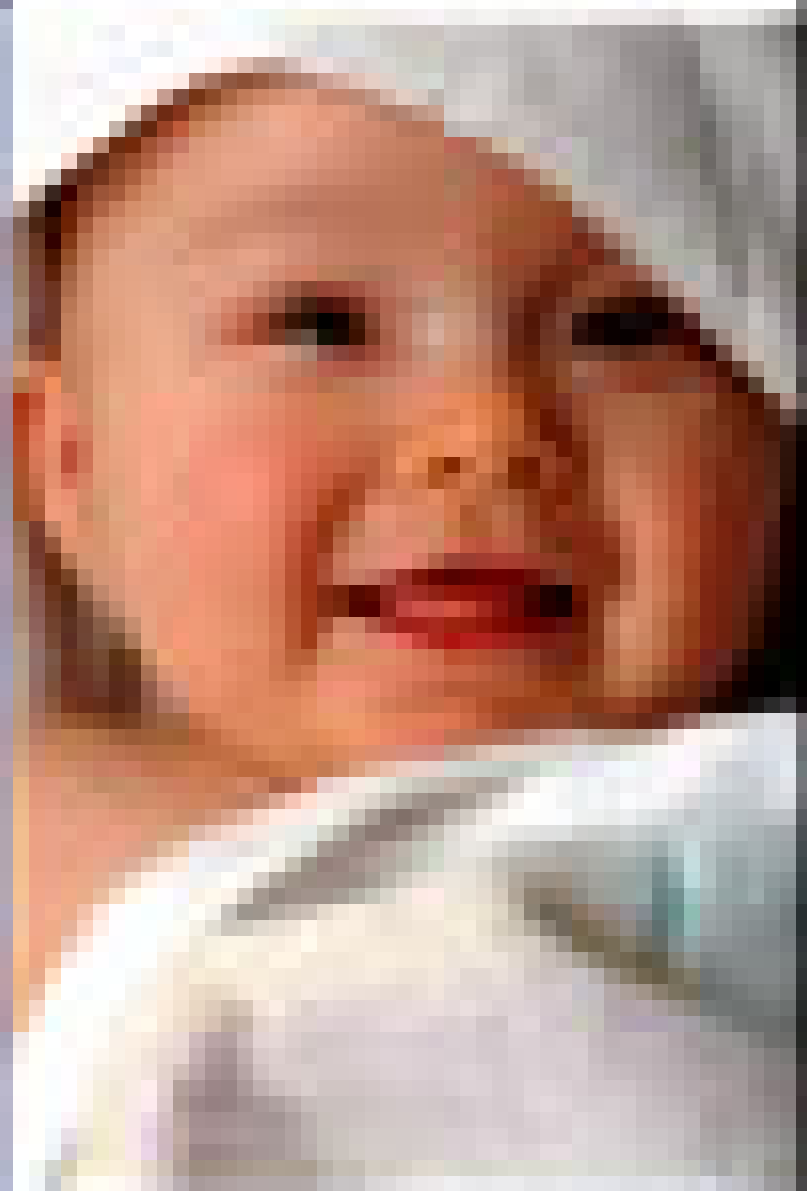




Library Services for the Deaf and Hard of Hearing
Service, Education, and Community for Tennesseans

[Middle TN Regional EHDI NHS Task Force Meeting](https://tndeaflibrary.nashville.gov/event/middle-tn-regional-ehdi-nhs-task-force-meeting-07-16-2014)
[\(https://tndeaflibrary.nashville.gov/event/middle-tn-regional-ehdi-nhs-task-force-meeting-07-16-2014\)](https://tndeaflibrary.nashville.gov/event/middle-tn-regional-ehdi-nhs-task-force-meeting-07-16-2014)

Newborn Hearing Screening



© 2008 by the American Academy of Audiology

This is an in-person event.

Event Date

Wed, Jul 16 2014, 9am CDT - 5 hours 30 minutes

Mid-Cumberland Regional Health Office

710 Hart Lane

Rooms A-B-C

Nashville, TN 37216

United States

[View on Google Maps](#)

<https://google.com/maps?q=710%20Hart%20Lane%20Rooms%20A-B-C%20Nashville%20TN%2037216%20US>

Contact Name

Julie Beeler

Contact Phone

865-765-3586 (Voice)

Tennessee's Department of Health Newborn Hearing Screening (NHS) Program is pleased to announce a Middle Tennessee Regional Task Force meeting in Nashville that includes the Upper Cumberland and South Central districts. This meeting is for anyone who provides services to newborns, infants, and young children who are suspected to have or have been identified with hearing loss as well as their parents. The success of this meeting depends on participation from a variety of individuals including parents, hospital screeners, audiologists, early intervention staff, medical providers, speech-language pathologists, early head start staff, midwives, family support providers, deaf educators, deaf-blind specialists, university personnel, and home visitors. Meetings have already been conducted in Memphis, Jackson, Chattanooga, and Knoxville with great success!

Objectives for this interactive meeting include:

- *Learning current national and state initiatives for EHDI/NHS

- *Teaming with parents and other providers to identify strengths and areas of need related to EHDI/NHS services in your region

- *Collaborating with the state's NHS program to develop and implement change strategies for screening, follow-up, intervention, and family support

Please share this invitation with anyone who cares about EHDI services in your region!

RSVP and/or Questions to Julie Beeler

TN NHS Audiology Consultant

865-765-3586 or jbeeler8@utk.edu (<mailto:jbeeler8@utk.edu>)

Alternate Contact

Tonya Bowman

Alternate Phone

800-840-2410 (Voice)

Region

[Middle](https://tndeaflibrary.nashville.gov/event-region/middle) (<https://tndeaflibrary.nashville.gov/event-region/middle>)

Select the state where your organization or point of contact is located.

Tennessee

Email Address

jbeeler8@utk.edu (<mailto:jbeeler8@utk.edu>)

No

Event Type

[Accessible Programs \(https://tndeaflibrary.nashville.gov/event-types/accessible-programs\)](https://tndeaflibrary.nashville.gov/event-types/accessible-programs)

[Meetings \(https://tndeaflibrary.nashville.gov/event-types/meetings\)](https://tndeaflibrary.nashville.gov/event-types/meetings)

[Parent Programs \(https://tndeaflibrary.nashville.gov/event-types/parent-programs\)](https://tndeaflibrary.nashville.gov/event-types/parent-programs)

Event Website

<http://www.tnhandsandvoices.org/> (<http://www.tnhandsandvoices.org/>)

The state(s) you choose will also populate that state(s) calendar.* After you create an event, use the "Clone" tab to duplicate the event on additional dates.

GEO Location

POINT (-86.741589 36.213718)

Updated: May 22, 2014 11:49am CDT

Source URL:

<https://tndeaflibrary.nashville.gov/event/middle-tn-regional-ehdi-nhs-task-force-meeting-07-16-2014>

List of links present in page

- <https://tndeaflibrary.nashville.gov/event/middle-tn-regional-ehdi-nhs-task-force-meeting-07-16-2014>
- <https://google.com/maps?q=710%20Hart%20Lane%20Rooms%20A-B-C%20Nashville%20TN%2037216%20US>
- <mailto:jbeeler8@utk.edu>
- <https://tndeaflibrary.nashville.gov/event-region/middle>
- <https://tndeaflibrary.nashville.gov/event-types/accessible-programs>
- <https://tndeaflibrary.nashville.gov/event-types/meetings>
- <https://tndeaflibrary.nashville.gov/event-types/parent-programs>
- <http://www.tnhandsandvoices.org/>